

Rolling Fields 

**WELCOME HOMEOWNERS
TO 2010-2011 ANNUAL
GENERAL MEETING**

June 2, 2010 7:00 P.M.

**Members of the Board :
President Douglas Wroblewski**

Vice President / Treasurer Larry Page

Secretary Craig Yonkovich

Rolling Fields



POND FACT FINDING MISSION

OVERVIEW

- POND IDENTIFICATION AND CLASSIFICATIONS
- WISCONSIN DNR FINDINGS
- VILLAGE OF MOUNT PLEASANT FINDINGS
- MAINTENANCE REQUIREMENTS
- STORM WATER MANAGEMENT
- QUESTIONS

Rolling Fields



POND AND WETLAND IDENTIFICATION AND CLASSIFICATIONS

FOUR PONDS ARE IN THE ROLLING FIELDS SUBDIVISION

1. SOUTH STORM WATER DETENTION BASIN, LOCATED ON ROLLING FIELD S DRIVE.
2. EAST STORM WATER DETENTION BASIN, LOCATED NEAR WYNFIELD AND DEERFIELD ROAD.
3. WEST STORM DETENTION DETENTION BASIN, LOCATED NEAR EMMERTSEN ROAD.
4. NORTH STORM WATER DETENTION BASIN , LOCATED NEAR HWY 38.
5. ONE WETLAND, LOCATED EAST OF WYNFIELD DRIVE LOTS 70,71,72,73

Rolling Fields

SOUTH DETENTION BASIN



Rolling Fields

EAST DETENTION BASIN



Rolling Fields

WEST DETENTION BASIN



Rolling Fields

NORTH DETENTION BASIN



Rolling Fields

WETLAND



Rolling Fields



WISCONSIN DNR FINDINGS

**PETER C. WOOD
WATER RESOURCES ENGINEER**

- ❖ INSPECTION COMPLETED APRIL 10TH 2010
- ❖ IN 2001 MASTERCRAFT BUILDERS APPLIED FOR AND OBTAINED A DNR PERMIT TO CONVERT TWO NATURAL WETLANDS INTO STORM WATER DETENTION PONDS (SOUTH AND EAST DETENTION BASINS)
- ❖ THESE TWO PONDS WERE PERMITTED BY THE DNR TO BE DREDGED TO A SHALLOW WATER DEPTH TO SIMULATE THE WETLAND CONDITIONS THAT EXISTED ON THE PROPERTY PRIOR TO DEVELOPMENT
- ❖ AS THE RESULT VIGOROUS WETLAND PLANT GROWTH SHOULD BE EXPECTED TO OCCUR IN THE THESE PONDS DUE SHALLOW DEPTHS

Rolling Fields



WISCONSIN DNR FINDINGS

**PETER C. WOOD
WATER RESOURCES ENGINEER**

- ❖ EXCESSIVE ALGAE GROWTH AND OTHER AESTHETIC CONCERNS ARE COMMON.
- ❖ RE-SUSPENSION OF VARIOUS POLLUTANTS THAT ACCUMULATE IN THE BOTTOM OF THE PONDS. THE ENERGY OF FLOWING WATER ASSOCIATED WITH THE IN FLOW OF RUNOFF CAN STIR UP BOTTOM SEDIMENTS AND NUTRIENTS PROVIDING FOOD FOR PLANTS AND ALGAE.



WISCONSIN DNR FINDINGS

PETER C. WOOD
WATER RESOURCES ENGINEER

CORRECTIVE ACTIONS

1. PREVENTION IS MOST EFFECTIVE MEANS (e.g, MINIMIZE FERTILIZER GRASS CLIPPINGS AND TRASH WITHIN POND DRAINAGE AREAS.)
2. ALLOWING WETLAND VEGETATION TO FULLY ESTABLISH MAY be THE ONLY MEANS AVAILABLE TO CONTROL RE-SUSPENSION.
3. WETLAND PLANTS CAN REDUCE ENERGY OF FLOWING WATER



WISCONSIN DNR FINDINGS

PETER C. WOOD
WATER RESOURCES ENGINEER

WETLAND FINDINGS

- STILL CONSIDERED DNR REGULATED WETLAND
- CAN NOT BE FILLED OR EXCAVATED WITHOUT PERMIT
- THE WETLAND CAN BE MOWED
- ASSOCIATION COULD HIRE A WETLAND CONSULTANT TO CONDUCT A NEW WETLAND DELINEATION TO DETERMINE IF A WETLAND STILL EXISTS OR IF THE BOUNDARIES HAVE CHANGED



VILLAGE OF MOUNT PLEASANT FINDINGS

Anthony J. Beyer
Water Systems Engineer

- VILLAGE AGREED WITH THE DNR FINDINGS PRIOR TO INSPECTION
- INSPECTION COMPLETED 24 MAY 2010
- ALL FOUR DETENTION BASINS ARE CONSIDERED STORM WATER DETENTIONS PONDS AND ARE DESIGNED TO STORE STORM WATER.
- THIS MEANS THEY NEED TO BE MAINTAINED TO DESIGNED SPECIFICATIONS.

Rolling Fields



VILLAGE OF MOUNT PLEASANT FINDINGS

Anthony J. Beyer
Water Systems Engineer

1. REQUIRED MAINTENANCE

- ✓ MOWING SIDE SLOPES, EMBANKMENTS AND EMERGENCY SPILLWAYS.
 1. THIS SHOULD BE AT LEAST TWICE A YEAR TO PREVENT. WOODY GROWTH AND CONTROL OF NOXIOUS WEEDS.
 2. INSPECTION OF PONDS SHALL BE COMPLETED ON AN ANNUAL BASIS

Rolling Fields



VILLAGE OF MOUNT PLEASANT FINDINGS

Anthony J. Beyer
Water Systems Engineer

- ✓ REMOVAL OF DEBRIS AND LITTER
- ✓ EROSION CONTROL
- ✓ NUISANCE CONTROL
- 1. NON- ROUTINE MAINTENANCE
 - a) STRUCTURAL REPAIR AND REPLACEMENT
 - b) SEDIMENT REMOVAL (VERY COSTLY)

Rolling Fields



VILLAGE OF MOUNT PLEASANT FINDINGS

Anthony J. Beyer
Water Systems Engineer

AESTHETICS

- PERTAINS TO MEASURES THAT MAY IMPROVE THE VISUAL APPEARANCE.

-EXAMPLES

-AERATION

-DYES

-CHEMICALS

- THESE MEASURES ARE NOT REQUIRED TO ENSURE PROPER FUNCTION OF THE STORM WATER BASINS.



VILLAGE OF MOUNT PLEASANT FINDINGS

Anthony J. Beyer
Water Systems Engineer

SOUTH DETENTION FINDINGS

- ❑ THIS POND HAS A COUPLE OF AREAS OF INTEREST. THE DESIGN OF THIS POND HAS THE INLET AND OUTLET WITHIN A FEW FEET OF EACH OTHER. THIS IS CAUSING SEDIMENT TO FILL IN CAUSING STORM WATER RUN OFF TO DRAIN OUT THE OUT FLOW BEFORE SETTLING OUT SEDIMENTS.
- ❑ THIS WAS ONE OF THE PONDS CONVERTED FROM A WETLAND TO A POND.



VILLAGE OF MOUNT PLEASANT FINDINGS

Anthony J. Beyer
Water Systems Engineer

SOUTH DETENTION BASIN

1) CORRECTIVE MAINTENANCE ACTION RECOMMENDATION IS TO HAND SHOVEL OUT SEDIMENT AND DEEPEN THE V-CHANNELS AT THE INLET AND OUTLETS . CORRECT ROCK PILES IN THE SPILL WAY. THIS CAN BE DONE WITHOUT PERMIT BECAUSE IT'S CONSIDERED MAINTENANCE.

2) ALLOW WETLAND VEGETATION TO GROW BACK

THE ABOVE RECOMMENDATIONS DO NOT NEED TO BE CORRECTED IMMEDIATELY, BUT WILL NEED ATTENTION IN THE NEXT 5-7 YEARS

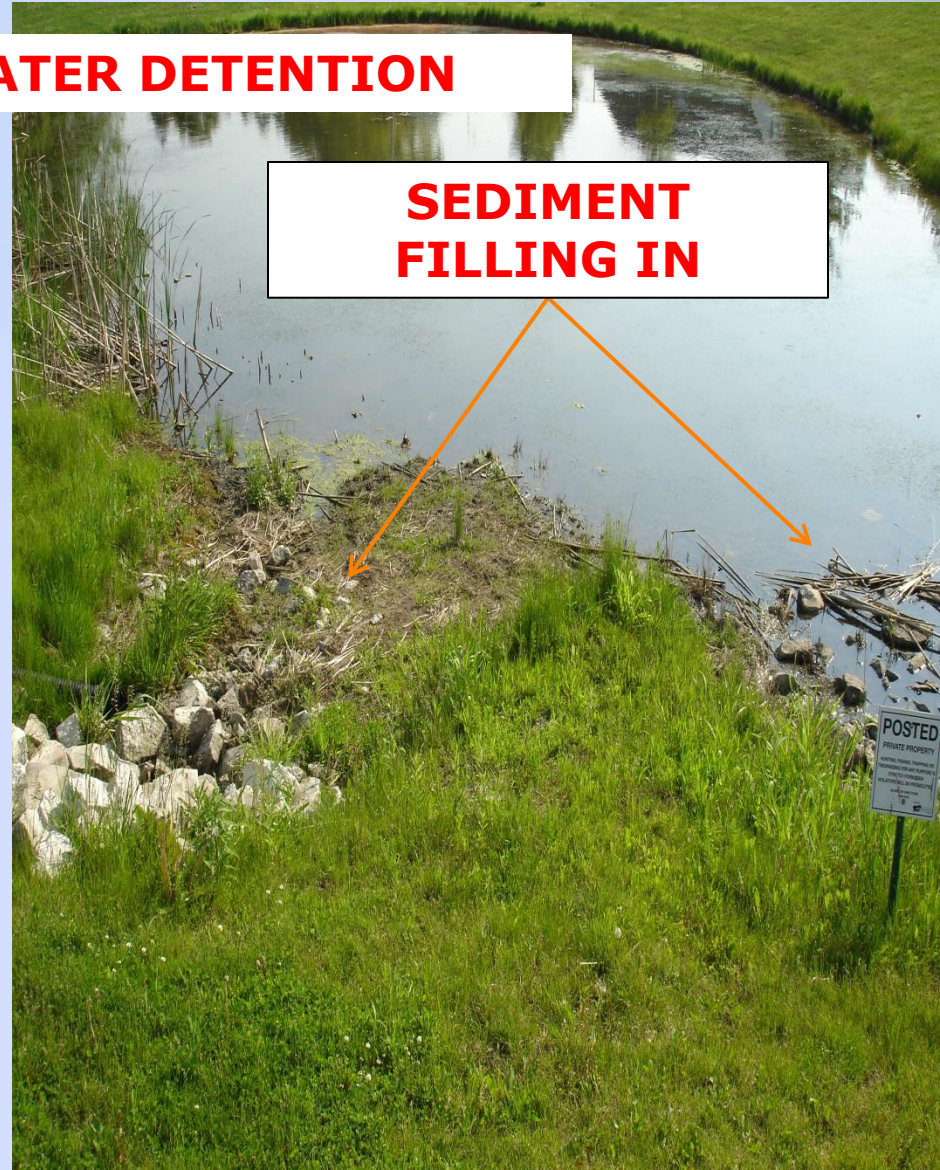
Rolling Fields

INLET

SOUTH STORM WATER DETENTION

OUTLET

**SEDIMENT
FILLING IN**





VILLAGE OF MOUNT PLEASANT FINDINGS

Anthony J. Beyer
Water Systems Engineer

EAST DETENTION BASIN

- WETLAND CONVERTED INTO A STORM WATER DETENTION BASIN.
- DESIGNED TO BE SHALLOW TO SIMULATE WETLAND CONDITIONS AND TO ADD ADDITIONAL STORAGE CAPACITY.
- RECOMMENDATION IS TO LET WETLAND PLANTS TO FILL IN AND TO MAINTAIN INLET AND OUTLETS. FOR AESTHETICS MOWING AND CUTTING OUT TREE SAPLINGS AS NEEDED
- CUT OUT BUSH GROWING IN 100 YR FLOOD SPILLWAY

Rolling Fields

EAST DETENTION BASIN

TREE SAPLINGS



Rolling Fields



Rolling Fields

100 YEAR FLOOD SPILLWAY



REMOVE BUSH



VILLAGE OF MOUNT PLEASANT FINDINGS

Anthony J. Beyer
Water Systems Engineer

WEST DETENTION BASIN

- **NO IMMEDIATE CONCERNS.**
- **THE DNR RECOMMENDED TO CUT AWAY BUSHES NEAR THE EDGE OF DETENTION BASIN. DAMAGE TO THE EMBANKMENT COULD OCCUR WHEN ROOT SYSTEM GROWS LARGER.**
- **BOTH THE DNR AND VILLAGE SAID AERATION IS NOT REQUIRED FOR KEEPING THE BASIN FUNCTIONING. IT ONLY HELPS FOR AESTHETICS.**

Rolling Fields

WEST DETENTION BASIN

BUSHES GROWING ON THE EMBANKMENT





VILLAGE OF MOUNT PLEASANT FINDINGS

Anthony J. Beyer
Water Systems Engineer

NORTH DETENTION BASIN

- POND IS TOO SHALLOW TO MAINTAIN LIKE THE WEST DETENTION BASIN. THIS BASIN CAN BE MAINTAINED LIKE THE SOUTH AND EAST BASINS.
- OUTLET NEEDS TO BE CLEAN OF DEBRIS.

Rolling Fields

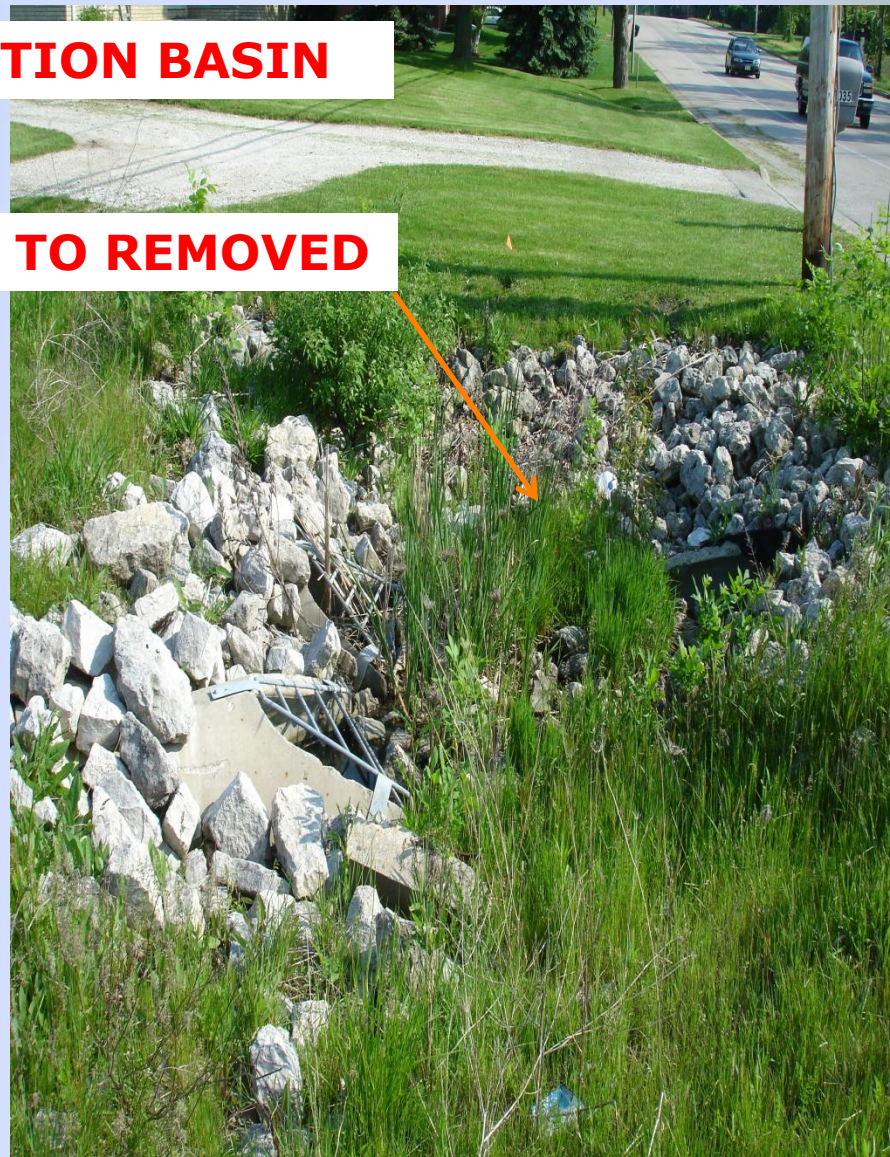
NORTH DETENTION BASIN



Rolling Fields

NORTH DETENTION BASIN

DEBRIS NEED TO REMOVED





MAINTENANCE REQUIREMENTS

REFERENCE EXHIBIT "C" PAGE 794 RETENTION POND OPERATION AND MAINTENANCE PLAN

1. ALL INLET AND OUTLET SHALL BE CLEANED OF ANY DEBRIS ON A QUARTERLY BASIS AT A MINIMUM
2. REMOVAL AND DISPOSAL OF LITTER FROM LANDSCAPED AREAS AND MATERIALS FLOATING ON THE SURFACE
3. MAINTENANCE OF VEGETATED AREAS THROUGH RESEEDING DAMAGED AREAS MOWING AND REMOVAL OF TREE SEEDLINGS
4. SPECIAL INSPECTIONS AND REPAIRS ANNUALLY OR AS REQUIRED.
5. REPAIR ANY ERODED OR SLUMPING AREAS ON OR AROUND EMBANKMENT.
6. INSPECT FOR EXCESSIVE DEPOSITION AND IDENTIFY AND CORRECT THE SOURCE AREA.
7. INSPECT INLETS AND OUTLETS FOR NEEDED REPAIRS OR CLOGGING.
8. CONTROL OF NUISANCE AQUATIC PLANTS AND MOSQUITOES THIS SHOULD ONLY BE CONDUCTED IF A NUISANCE OCCURS OR THREATENS FUNCTION OF THE BASIN.
9. NONE IS ANTICIPATED DUE TO THE DEPTHS OF THE BASINS

Rolling Fields



STORM WATER MANAGEMENT

THIS A NEIGHBORHOOD ISSUE AND REQUIRES ALL HOME OWNERS TO TAKE THIS SERIOUSLY. A FEW SIMPLE STEPS CAN PREVENT EXPENSIVE REPAIRS AND DAMAGE TO OUR STORM WATER DETENTION BASINS.

•LEADING RUNOFF POLLUTERS OF OUR BASINS ARE:

•IMPROPER DISPOSAL OF YARD WASTES

•IMPROPER FERTILIZER AND PESTICIDE APPLICATION

•EXCESS LAWN WATERING

- ALL THE ABOVE AFFECT THE WATER QUALITY , ALGAL GROWTH AND INCREASES AQUATIC PLANT GROWTH WHICH AFFECTS AESTHETICS OF THE BASINS.

Rolling Fields

STORM WATER MANAGEMENT

ADDITIONAL INFORMATION CAN FOUND AT:

- U.W. EXTENSIONS "RETHINKING YARD CARE"
- U.W. EXTENSIONS "LEAVES AND YARD TRIMMINGS"
- U.W. EXTENSIONS "LAWN AND GARDEN FERTILIZERS"
- U.W. EXTENSIONS "LAWN AND GARDEN PESTICIDES"
- U.W. EXTENSIONS "LAWN WEED CONTROL"
- <http://dnr.wi.gov/org/aw/wm/solid/rulerevisions.htm>

Rolling Fields



QUESTIONS ?